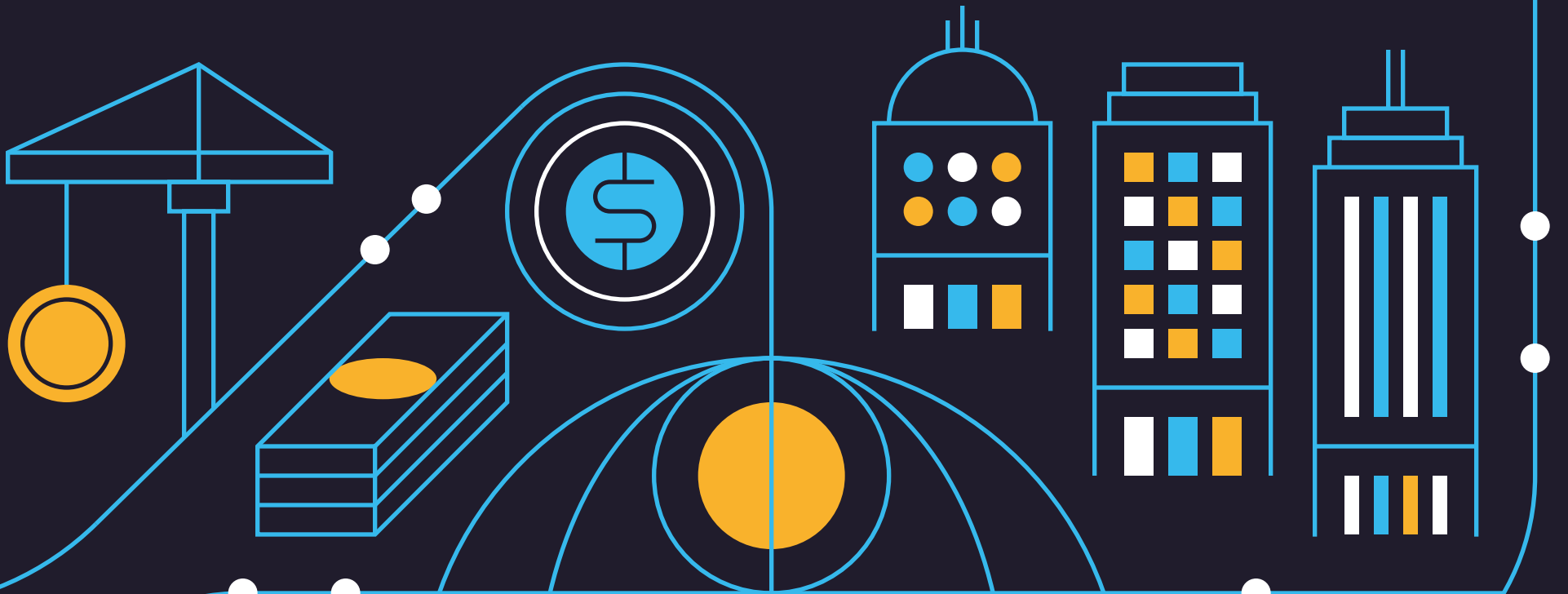


Pensions & Investments

THE INTERNATIONAL NEWSPAPER OF MONEY MANAGEMENT | FEBRUARY 12, 2024 | PIONLINE.COM | \$50 AN ISSUE / \$350 A YEAR

© CRAIN COMMUNICATIONS



The P&I 1000

Our annual look at the largest retirement funds



THE LARGEST RETIREMENT FUNDS

The largest retirement funds/sponsors

Ranked by total assets, in millions, as of Sept. 30.

Rank	2023 rank	Sponsor	Assets	Change	Total DB assets	Total DC assets	DB ASSET MIX				Key person
							Stocks	Bonds	Cash	Other	
1	1	Federal Retirement Thrift	\$782,835	13.5%		\$782,835					Sean McCaffrey, CIO
2	2	California Public Employees	\$452,453	4.7%	\$450,289	\$2,164	42.1%	22.3%	1.6%	34.0%	Dan Bienvenue, Deputy CIO-Total Portfolio & Interim CIO (DB); Christine Reese (DC)
3	3	California State Teachers	\$309,931	6.7%	\$307,868	\$2,063	38.2%	14.1%	2.1%	45.6%	Christopher Ailman, CIO (DB); Patrick Bivins, Pension Program Manager III (DC)
4	5	New York City Retirement	\$247,999	8.7%	\$247,999		43.2%	30.4%	1.0%	25.4%	Steven Meier, CIO & Deputy Comptroller-Asset Management
5	4	New York State Common	\$246,307	5.6%	\$246,307		41.3%	19.9%	1.0%	37.8%	Anastasia Titarchuk, CIO
6	6	Florida State Board	\$194,659	6.3%	\$180,466	\$14,193	48.9%	16.4%	1.2%	33.5%	Lamar Taylor, Interim Executive Director & CIO (DB); Daniel Beard, Chief of DC Programs (DC)
7	7	Texas Teachers	\$181,656	4.8%	\$181,656		35.7%	12.8%	2.5%	49.0%	Jase Auby, CIO
8	8	Washington State Board	\$167,033	7.8%	\$140,495	\$26,538	24.6%	16.3%		59.1%	Christopher Hanak, CIO
9	10	Wisconsin Investment Board	\$130,932	6.6%	\$124,565	\$6,367	42.0%	46.0%		12.0%	Edwin Denson, Executive Director & CIO (DB); Shelly Schueller, Director-Deferred Compensation (DC)
10	9	New York State Teachers	\$130,783	6.2%	\$130,783		52.2%	22.8%	1.2%	23.8%	Thomas K. Lee, Executive Director & CIO
11	11	North Carolina	\$126,472	6.5%	\$111,796	\$14,676	36.0%	26.2%	11.3%	26.5%	Christopher Morris, Co-CIO
12	12	Boeing	\$119,225	1.4%	\$51,005	\$68,220					Elizabeth Tulach, CIO
13	13	California University	\$118,284	6.6%	\$85,684	\$32,600	51.4%	13.1%	6.2%	29.3%	Jagdeep Singh Bachher, CIO & VP-Investments
14	14	Virginia Retirement	\$110,665	8.1%	\$104,010	\$6,655	25.7%	13.3%	1.6%	59.4%	Andrew H. Junkin, CIO (DB); Laura Pugliese, Portfolio Manager-DC Plans (DC)
15	16	Michigan Retirement	\$109,513	9.0%	\$96,813	\$12,700	32.1%	8.9%	4.4%	54.6%	Jon M. Braeutigam, CIO
16	15	Ohio Public Employees	\$107,468	6.4%	\$105,126	\$2,342	43.8%	24.3%	0.3%	31.6%	Paul Greff, CIO
17	17	Oregon Public Employees	\$98,280	2.4%	\$95,141	\$3,139	20.7%	20.8%		58.5%	Rex Kim, CIO (DB); Claire Iilo, Investment Officer (DC)
18	19	Massachusetts PRIM	\$95,241	7.7%	\$95,241		39.5%	17.3%	0.5%	42.7%	Michael G. Trotsky, Executive Director & CIO
19	20	Minnesota State Board	\$95,177	8.0%	\$83,036	\$12,141	50.0%	20.0%	4.0%	26.0%	Jill E. Schurtz, Executive Director & CIO
20	22	New Jersey	\$94,039	7.9%	\$88,789	\$5,250	44.8%	21.0%	9.5%	24.7%	Shoaib Khan, Director & CIO
21	23	Kaiser Permanente	\$91,551	5.2%	\$56,919	\$34,632					Thomas Lurquin, VP & CIO (DB); Rajiv Mathur, Executive Director (DC)
22	24	Georgia Teachers	\$91,088	6.7%	\$91,088		71.7%	26.7%	1.0%	0.6%	Charles W. Cary Jr., CIO
23	18	AT&T	\$90,497	-2.3%	\$45,605	\$44,892					
24	21	RTX	\$89,511	2.1%	\$41,232	\$48,279	18.0%	43.0%	3.0%	36.0%	Robin L. Diamonte, VP & CIO
25	25	Ohio State Teachers	\$87,456	5.4%	\$84,946	\$2,510	49.2%	19.1%	1.4%	30.3%	Matthew E. Worley, Deputy Exec. Dir.-Invest. & CIO
26	30	United Nations Joint Staff	\$81,546	9.9%	\$81,546		51.0%	29.4%	1.6%	18.0%	Pedro Guazo, Representative of the Secretary-General, OIM
27	26	Lockheed Martin	\$76,842	-3.9%	\$25,443	\$51,399					Paul Colonna, President & CIO-LMIMCO
28	29	IBM	\$76,670	1.2%	\$23,648	\$53,022	4.2%	82.5%		13.3%	Rick Klutey, Managing Director & CIO
29	27	General Electric	\$74,410	-3.9%	\$47,782	\$26,628					Harshal Chaudhari, Deputy Treasurer & CIO-Global Pensions
30	32	Tennessee Consolidated	\$74,373	7.9%	\$63,291	\$11,082	44.0%	17.3%	1.2%	37.5%	Michael Brakebill, CIO (DB); Hunter Bethea, Director-Deferred Compensation (DC)
31	28	General Motors	\$73,439	-4.2%	\$45,916	\$27,523					
32	33	Los Angeles County Employees	\$72,167	6.7%	\$72,167		32.0%	17.5%	1.3%	49.2%	Jonathan Grabel, CIO
33	31	United Parcel Service	\$71,931	3.2%	\$40,251	\$31,680	25.2%	41.3%	2.6%	30.9%	Ernie Caballero, CIO
34	34	Pennsylvania School Employees	\$69,072	4.7%	\$68,862	\$210	26.9%	23.9%	-2.9%	52.1%	Benjamin L. Cotton, CIO (DB); Jennifer Mills, Deputy Executive Director & Director-DC Investments (DC)
35	38	Illinois Teachers	\$65,637	8.2%	\$65,637		33.7%	11.5%	2.1%	52.7%	R. Stanley Rupnik, Executive Director & CIO
36	37	Bank of America	\$65,521	7.6%	\$16,666	\$48,855	34.3%	58.0%	0.5%	7.2%	David Andreasen, Director & SVP-Retirement Plan Invest.
37	35	Maryland State Retirement	\$63,269	3.1%	\$63,269		29.0%	26.3%	0.9%	43.8%	Andrew Palmer, CIO
38	40	Colorado Employees	\$63,017	8.2%	\$57,550	\$5,467	53.1%	18.9%	0.5%	27.5%	Amy C. McGarrity, Interim Executive Director & CIO
39	39	Northrop Grumman	\$62,427	3.9%	\$28,988	\$33,439	30.6%	37.6%	2.5%	29.3%	Dennis Newberry, VP-Investments & Trust
40	43	Nevada Public Employees	\$56,247	9.8%	\$56,247		54.7%	27.8%	3.7%	13.8%	Steve Edmundson, CIO
41	45	J.P. Morgan Chase	\$54,674	7.5%	\$15,155	\$39,519					Ameeta Gosain, CIO-DB Plan (DB); Daniela Nese (DC)
42	36	Ford Motor	\$54,659	-10.3%	\$32,889	\$21,770					Erin Rohde, CIO
43	41	Wells Fargo	\$54,550	-2.6%	\$8,784	\$45,766	11.6%	83.1%	2.7%	2.6%	Thomas B. Hooley, SVP
44	44	Missouri Schools & Education	\$53,527	4.6%	\$53,527		42.4%	14.5%	0.3%	42.8%	Craig A. Husting, CIO
45	46	Teamsters, Western Conference	\$53,428	5.9%	\$53,428		44.0%	16.0%	1.0%	39.0%	Alan D. Biller, Chairman, Alan Biller and Associates
46	48	Utah Retirement Systems	\$51,700	7.3%	\$43,300	\$8,400	35.0%	20.0%		45.0%	Daniel D. Andersen, Executive Director
47	47	Arizona State Retirement	\$50,678	4.0%	\$50,678		38.0%	4.0%	0.2%	57.8%	Paul Matson, Executive Director
48	57	Connecticut Retirement	\$49,982	23.2%	\$49,982		46.9%	21.4%	0.7%	31.0%	Ted Wright, CIO
49	42	FedEx	\$49,307	-7.4%	\$24,826	\$24,481	31.1%	48.8%	3.2%	16.9%	Jeff Lewis, VP-Retirement Investments
50	50	Illinois Municipal	\$48,922	7.5%	\$48,922		54.2%	24.1%	0.4%	21.3%	Angela Miller-May, CIO
51	52	South Carolina Public Employees	\$48,683	8.9%	\$39,879	\$8,804	44.2%	17.6%	2.8%	35.4%	Geoffrey Berg, CIO
52	49	State Farm	\$48,595	6.1%	\$32,855	\$15,740					
53	51	Verizon	\$45,773	2.2%	\$12,644	\$33,129					Laurence Fulton, CIO
54	54	Indiana Public Retirement	\$45,743	6.8%	\$39,006	\$6,737	15.6%	27.7%	1.5%	55.2%	Scott Davis, CIO
55	53	Johnson & Johnson	\$45,214	1.9%	\$21,596	\$23,618					Neil Roache, CIO
56	56	Alabama Retirement	\$44,169	8.6%	\$41,733	\$2,436	60.4%	15.7%	8.2%	15.7%	David G. Bronner, CEO
57	58	Texas County & District	\$43,779	8.4%	\$43,779		26.0%	31.0%	4.0%	39.0%	Casey Wolf, CIO
58	60	Microsoft	\$42,572	9.2%		\$42,572					Dan Goff, Corporate VP-Worldwide Tax
59	377	Teamsters, Central States	\$42,147	603.9%	\$42,147						Pete Priede, Sr. Director
60	55	Delta Air Lines	\$41,792	-2.0%	\$14,783	\$27,009	5.8%	5.7%	7.9%	80.6%	
61	59	Iowa Public Employees	\$41,129	2.5%	\$41,129		36.9%	24.7%	1.2%	37.2%	Sriram Lakshminarayanan, CIO
62	62	Texas Employees	\$40,039	7.6%	\$35,567	\$4,472	34.4%	18.3%	2.1%	45.2%	David T. Veal, CIO (DB); Angelica Harborth, DC Program Manager (DC)
63	70	Walmart	\$39,598	26.3%		\$39,598					Adam Stavisky, SVP-U.S. Benefits
64	61	Alaska Retirement	\$39,225	4.0%	\$30,616	\$8,609	41.7%	19.6%	1.0%	37.7%	Zachary Hanna, CIO
65	63	Pennsylvania Employees	\$38,805	6.3%	\$34,408	\$4,397	48.5%	18.1%	2.6%	30.8%	James G. Nolan, CIO (DB); Sara McSurdy, CFO (DC)
66	64	San Francisco City & County	\$38,097	4.7%	\$33,546	\$4,551	24.7%	5.4%	1.5%	68.4%	Alison Romano, CEO & CIO (DB); Diane Chui Justen, DC Plan Manager (DC)
67	66	Federal Reserve Employees	\$37,484	10.1%	\$25,100	\$12,384					William G. Clark, CIO

THE LARGEST RETIREMENT FUNDS

The largest retirement funds/sponsors

Ranked by total assets, in millions, as of Sept. 30.

Rank	2023 rank	Sponsor	Assets	Change	Total DB assets	Total DC assets	DB ASSET MIX				Key person
							Stocks	Bonds	Cash	Other	
68	65	Texas Municipal Retirement	\$37,216	7.0%	\$37,216		35.4%	5.9%	0.6%	58.1%	Yup S. Kim, CIO
69	77	Exxon Mobil	\$34,706	20.2%	\$11,861	\$22,845					P.B. Newman, Manager-Global Pension Fund
70	69	American Airlines	\$34,321	8.2%	\$11,496	\$22,825	40.0%	26.3%		33.7%	Ken Menezes, Managing Director-AM, F&E, CI&R
71	76	New York State Deferred Comp.	\$33,890	16.8%		\$33,890					Sharon Lukacs, Executive Director
72	67	Nokia USA	\$33,447	-0.9%	\$24,672	\$8,775					John Hickey, VP-Global Benefits
73	71	Mississippi Employees	\$33,134	6.0%	\$31,061	\$2,073	58.1%	18.6%	0.7%	22.6%	Charles Nielsen, CIO
74	74	General Dynamics	\$32,331	9.7%	\$11,693	\$20,638					
75	97	Chevron	\$31,589	27.6%	\$11,597	\$19,992					
76	75	CVS Health	\$31,504	7.7%	\$5,467	\$26,037					Peter Oades, SVP & CIO
77	72	Honeywell	\$31,322	1.9%	\$17,290	\$14,032	30.0%	46.0%	3.0%	21.0%	Dominick DeAlto, VP-Investments (DB); Charles Malone, Director-Savings Plan Investments (DC)
78	95	Alphabet	\$31,044	25.1%		\$31,044					
79	79	National Electric	\$31,022	11.2%	\$17,527	\$13,495					Kevin McCormack, Exec. Director-NEBF Investments
80	68	Pfizer	\$30,971	-2.6%	\$11,769	\$19,202					
81	73	World Bank	\$30,799	4.1%	\$30,799						John F. Gandolfo, Director & CIO
82	82	Procter & Gamble	\$30,070	10.6%	\$1,441	\$28,629					
83	78	Illinois State Board	\$29,568	5.2%	\$24,376	\$5,192	44.8%	24.4%	0.5%	30.3%	Scott Richards, Sr. Investment Officer (DB); Jennifer Koelle, Investment Officer-Public Markets (DC)
84	93	Costco Wholesale	\$29,224	16.4%		\$29,224					Mark Siegel, AVP-Benefits
85	83	Los Angeles Fire & Police	\$28,980	7.8%	\$28,980		50.0%	20.3%	4.6%	25.1%	Bryan Fujita, CIO
86	92	Caterpillar	\$28,476	13.4%	\$12,625	\$15,851					Martin Rumbold, Defined Benefit Manager (DB); Trisha Romero (DC)
87	91	United Airlines Holdings	\$28,300	12.3%	\$3,100	\$25,200					Eric Harder, Managing Director-Corporate Finance
88	85	Citigroup	\$28,123	7.9%	\$9,860	\$18,263	6.6%	66.4%	1.5%	25.5%	Pantelis Apeossos, Man. Dir.-Strategy & Invest. (DB); Leonardo Rodriguez, Dir. & Sr. Invest. Officer (DC)
89	102	Deloitte	\$27,790	16.6%	\$7,457	\$20,333	24.4%	56.5%	1.1%	18.0%	Alex Lee, CIO
90	98	Intel	\$27,616	11.6%	\$816	\$26,800	10.0%	89.5%	0.5%		Max Prokopisins, Treasury Manager
91	101	New York City Deferred Comp.	\$27,552	11.7%		\$27,552					Georgette Gestely, Director
92	90	Walt Disney	\$27,500	8.8%	\$15,400	\$12,100					Carrie-Ann Stepien, Director
93	89	Louisiana Teachers	\$27,348	6.5%	\$24,551	\$2,797	35.5%	11.8%	3.2%	49.5%	Philip Griffith, CIO (DB); Blake Lee, Manager-Public Markets (DC)
94	100	Stellantis NA	\$26,739	8.4%	\$17,724	\$9,015					
95	80	3M	\$26,331	-4.9%	\$14,365	\$11,966					
96	94	Illinois State Universities	\$26,288	4.8%	\$22,634	\$3,654	34.8%	21.9%	0.4%	42.9%	Suzanne Mayer, Executive Director
97	96	Kansas Public Employees	\$26,169	5.7%	\$24,793	\$1,376	48.4%	22.5%	3.3%	25.8%	Bruce Fink, CIO (DB); Arlen Zentner, DC Plan Officer (DC)
98	84	Dow	\$26,079	-2.0%	\$16,080	\$9,999					
99	103	CommonSpirit Health	\$25,434	7.8%	\$8,534	\$16,900	47.2%	21.4%	1.2%	30.2%	Alyssa Rieder, VP & CIO (DB); Liz Meckenstock (DC)
100	86	Shell USA	\$25,191	-2.1%	\$14,974	\$10,217					
101	110	Ernst & Young	\$24,980	11.9%	\$8,312	\$16,668					Walter Kress, CIO
102	87	PepsiCo	\$24,801	-3.5%	\$11,838	\$12,963					
103	104	Abbott Laboratories	\$24,754	5.8%	\$10,430	\$14,324					
104	107	FMR	\$24,658	9.3%		\$24,658					
105	111	SUNY	\$24,643	11.2%		\$24,643					Michael Consorte, Director-Universitywide Benefits
106	88	PG&E	\$24,582	-4.3%	\$16,739	\$7,843					Ashley Mawhorter, Principal
107	105	National Railroad	\$24,310	5.2%	\$24,300	\$10					William J. Carr III, CEO & CIO
108	113	Southern Co.	\$23,502	7.9%	\$15,157	\$8,345					
109	109	Oracle	\$23,475	5.0%		\$23,475					Peter Shott, VP-Human Resources
110	114	Deere	\$23,393	9.1%	\$13,243	\$10,150					Jeffrey A. Trahan, VP & Treasurer
111	115	Operating Engineers International	\$23,193	8.2%	\$23,193		51.4%	25.0%		23.6%	Marc D. Becker, Director-Investments
112	116	Kentucky Teachers	\$23,191	8.9%	\$23,191		59.3%	12.9%	0.7%	27.1%	Gary Harbin, Executive Secretary
113	122	Idaho Public Employees	\$22,961	15.5%	\$21,523	\$1,438	54.8%	29.0%	0.3%	15.9%	Richelle A. Sugiyama, CIO
114	108	Prudential Financial	\$22,517	0.5%	\$12,388	\$10,129	2.7%	56.5%	0.6%	40.2%	Gail Maytin, CIO
115	106	Truist Financial	\$22,375	-2.0%	\$12,744	\$9,631					Jeffrey J. Schappe, CIO
116	155	Sammons Enterprises	\$22,319	43.8%		\$22,319					
117	112	Hawaii Employees	\$22,189	1.0%	\$22,189		22.4%	3.0%		74.6%	Kristin Varela, CIO
118	119	National Rural Electric	\$22,163	9.1%	\$8,566	\$13,597	52.8%	15.6%	3.7%	27.9%	Corey Amon, CIO
119	99	Ascension	\$21,944	-11.2%	\$6,939	\$15,005					David Erickson, CIO
120	120	Mass General Brigham	\$21,790	8.9%	\$9,241	\$12,549					
121	123	Merck	\$21,526	8.3%	\$8,722	\$12,804	61.4%	36.3%	1.0%	1.3%	Timothy Dillane, Assistant Treasurer
122	124	Los Angeles City Employees	\$21,436	8.2%	\$21,436		45.6%	27.9%	1.3%	25.2%	Rodney L. June, CIO
123	117	L3Harris Technologies	\$21,220	2.7%	\$7,401	\$13,819					
124	127	Mayo Clinic	\$21,068	9.2%	\$10,574	\$10,494					
125	121	Orange County	\$21,046	5.5%	\$21,046		45.5%	11.6%	0.5%	42.4%	Molly A. Murphy, CIO
126	129	Eli Lilly	\$20,950	10.6%	\$10,322	\$10,628	22.0%	1.5%	3.7%	72.8%	Susan Ridlen, Assistant Treasurer
127	125	Arkansas Teachers	\$20,745	5.1%	\$20,745		54.0%	14.0%	0.8%	31.2%	Rod Graves, Deputy Director
128	131	Nebraska Investment Council	\$20,705	10.7%	\$19,818	\$887					Ellen Hung, State Investment Officer
129	128	Georgia Employees	\$20,631	7.8%	\$17,934	\$2,697	70.0%	26.2%		3.8%	Charles W. Cary Jr., CIO (DB); Jim Potvin, Executive Director (DC)
130	134	Arizona Public Safety	\$20,540	12.2%	\$19,808	\$732	37.3%	8.8%	7.0%	46.9%	Mark Steed, CIO (DB); William Thatcher, Portfolio Manager (DC)
131	133	Oklahoma Teachers	\$20,084	9.1%	\$20,084		58.9%	23.6%	0.2%	17.3%	Sarah Green, Executive Director
132	138	HCA Healthcare	\$20,056	13.5%		\$20,056					
133	126	Consolidated Edison	\$20,002	2.2%	\$14,688	\$5,314					Robert Hoglund, SVP & CFO
134	143	UnitedHealth	\$19,991	17.0%		\$19,991					

THE LARGEST RETIREMENT FUNDS

Rank	2023 rank	Sponsor	Assets	Change	Total DB assets	Total DC assets	DB ASSET MIX				Key person
							Stocks	Bonds	Cash	Other	
135	150	New York City MTA	\$19,863	22.9%	\$10,937	\$8,926					
136	141	California Savings Plus	\$19,700	14.0%		\$19,700					Sandy Blair, Administrator
137	151	Providence Health	\$19,196	19.1%	\$1,463	\$17,733	44.0%	29.0%	6.0%	21.0%	Alec Stais, CIO
138	136	West Virginia Investment	\$19,185	7.4%	\$19,185		46.1%	15.4%		38.5%	Craig Slaughter, Executive Director & CIO
139	118	Wespath (UMC)	\$19,156	-6.5%	\$8,406	\$10,750	23.0%	65.7%		11.3%	David Zellner, CIO
140	169	Publix Super Markets	\$19,108	32.3%		\$19,108					
141	167	Amazon.com	\$19,049	30.8%		\$19,049					
142	140	Los Angeles Water & Power	\$19,026	8.7%	\$19,026		41.1%	22.5%	0.8%	35.6%	Jeremy Wolfson, CIO
143	130	Morgan Stanley	\$18,781	9.8%	\$1,894	\$16,887					
144	149	Ohio Deferred Compensation	\$18,665	15.2%		\$18,665					Paul Miller, Interim Executive Director
145	137	Maine Public Employees	\$18,654	5.0%	\$18,595	\$59	24.8%	12.7%	0.2%	62.3%	James Bennett, CIO
146	139	Los Angeles County Deferred	\$18,645	6.2%		\$18,645					Teresa Gee, Chief Public Finance Officer
147	135	Episcopal Church	\$18,239	1.6%	\$16,779	\$1,460					Michael J. Hood, EVP, CIO & Managing Director
148	132	Corteva	\$17,848	-3.5%	\$11,246	\$6,602	13.1%	53.7%	4.5%	28.7%	Valerie J. Sill, President & CEO-DuPont Capital
149	148	PricewaterhouseCoopers	\$17,582	8.3%	\$3,542	\$14,040					
150	144	Koch Industries	\$17,555	4.9%	\$6,986	\$10,569					
151	146	Ohio School Employees	\$17,455	5.6%	\$17,455		38.4%	14.7%	3.9%	43.0%	Farouki A. Majeed, CIO
152	157	New York City Teachers	\$17,388	13.6%		\$17,388					Ronald Swingle, Deputy Director-Investment Admin.
153	154	Medtronic	\$17,387	11.8%	\$3,610	\$13,777	37.0%	43.0%	2.0%	18.0%	Ross Pillsbury, Director-Global Investments
154	142	Duke Energy	\$17,344	1.2%	\$7,284	\$10,060					
155	145	New Mexico Public Employees	\$17,028	2.1%	\$16,274	\$754	24.3%	21.5%	0.2%	54.0%	Michael Shackelford, CIO (DB); Karyn Lujan, DC Manager (DC)
156	147	Ohio Police & Fire	\$16,880	2.7%	\$16,880		21.2%	25.6%	3.6%	49.6%	Theodore G. Hall, CIO
157	172	Accenture	\$16,817	18.8%	\$221	\$16,596		99.0%	1.0%		
158	158	Cisco Systems	\$16,665	9.7%		\$16,665					
159	166	Kentucky Public Pensions	\$16,594	13.4%	\$16,594		44.5%	32.6%	7.1%	15.8%	David L. Eager, Executive Director
160	162	U.S. Bancorp	\$16,516	10.1%	\$7,636	\$8,880					
161	171	National Elevator Industry	\$16,418	15.7%	\$10,832	\$5,586					
162	152	Liberty Mutual	\$16,360	2.1%	\$6,909	\$9,451					
163	174	Comcast Holdings	\$16,287	17.2%		\$16,287					Lawrence J. Salva, SVP, Chief Accounting Officer & Controller
164	159	Cigna	\$16,200	7.3%	\$3,900	\$12,300					
165	179	Apple	\$16,110	18.6%		\$16,110					
166	163	New Mexico Educational	\$16,021	7.3%	\$16,021		25.9%	22.8%	1.3%	50.0%	Bob Jacksha, CIO
167	170	San Diego County	\$16,021	11.4%	\$16,021		50.6%	30.8%		18.6%	Stephen C. Sexauer, CIO
168	161	MetLife	\$15,925	6.0%	\$7,892	\$8,033					
169	153	1199SEIU National	\$15,869	0.0%	\$15,776	\$93					Lorraine Monchak, CIO
170	164	Toyota USA	\$15,513	4.1%	\$4,636	\$10,877					Soo young Der, Manager-Investment Group
171	81	Exelon	\$15,300	-44.5%	\$9,736	\$5,564					Douglas Brown, SVP & CIO
172	165	South Dakota	\$15,169	3.0%	\$14,486	\$683	36.2%	15.2%	24.0%	24.6%	Matt Clark, State Investment Officer
173	181	University of Pennsylvania	\$14,965	11.9%	\$2,301	\$12,664					
174	184	Michigan Municipal	\$14,939	14.3%	\$11,557	\$3,382	49.8%	21.1%	1.4%	27.7%	Jeb Burns, CIO
175	178	IAM National	\$14,862	9.4%	\$14,115	\$747					Jonathan S. Young, Director-Investments & 401(k) Plan
176	229	NYU	\$14,830	38.9%	\$1,814	\$13,016					
177	180	Roche USA	\$14,821	9.2%	\$3,118	\$11,703					David McDede, VP & Treasurer
178	177	Target	\$14,718	7.4%	\$3,415	\$11,303					Al Ezban, Director
179	173	Bayer	\$14,558	4.7%	\$4,692	\$9,866					Randy Brodsky, Director-Capital Markets & Trust Invest.
180	160	AbbVie	\$14,542	-3.5%	\$4,394	\$10,148	64.0%	22.0%		14.0%	
181	175	USAA	\$14,330	3.6%	\$5,012	\$9,318					David Yim, CIO
182	182	San Bernardino County	\$14,308	8.8%	\$14,308		17.9%	13.7%	7.6%	60.8%	Donald Pierce, CIO
183	185	Montana Board of Investment	\$14,209	9.0%	\$14,209		41.3%	20.9%	1.2%	36.6%	Dan Villa, Executive Director
184	176	Electrical Industry, Joint Board	\$13,910	0.9%	\$4,496	\$9,414	46.0%	22.0%	1.0%	31.0%	Robert Ball, CIO
185	168	Dominion Energy	\$13,892	-4.4%	\$8,959	\$4,933					William J. McHugh, Assistant Treasurer-Asset Mgmt.
186	156	International Paper	\$13,719	-11.3%	\$8,120	\$5,599	15.7%	49.5%	1.9%	32.9%	Carol Tusch, CIO
187	183	PNC	\$13,647	3.9%	\$5,242	\$8,405					
188	189	Cox Enterprises	\$13,642	9.4%	\$7,257	\$6,385					Frank Glover, Sr. Director-Retirement Investments
189	187	BAE (NA)	\$13,542	5.2%	\$4,698	\$8,844					
190	202	Louisiana State Employees	\$13,425	13.6%	\$13,425		51.7%	19.4%	1.7%	27.2%	Robert W. Beale, CIO
191	186	HP	\$13,366	3.5%	\$3,853	\$9,513					
192	199	Bank of New York Mellon	\$13,332	11.7%	\$8,286	\$5,046					
193	205	KPMG	\$13,287	13.9%	\$4,634	\$8,653	32.0%	56.0%	4.0%	8.0%	Bruno G. Grimaldi, Managing Director-Pension Investments & Ind.
194	190	Southwest Airlines	\$13,120	6.2%		\$13,120					Elaine Parham, Sr. Manager-Compensation
195	193	Deseret Mutual Benefit	\$12,937	6.2%	\$7,927	\$5,010					
196	194	BP America	\$12,900	6.3%	\$5,100	\$7,800					Don Kettering, VP-Pensions
197	206	Dell Technologies	\$12,820	10.4%	\$389	\$12,431					Chris Johnson, Retirement Program Manager
198	191	Delaware Public Employees	\$12,695	3.4%	\$12,695		49.7%	25.2%	5.8%	19.3%	Joanna Adams, Pension Administrator
199	201	Walgreens Boots Alliance	\$12,690	7.0%		\$12,690					
200	200	Travelers	\$12,631	6.3%	\$4,030	\$8,601					

Top 200 total

\$9,445,864

THE LARGEST RETIREMENT FUNDS

The largest retirement funds/sponsors

Ranked by total assets, in millions, as of Sept. 30.

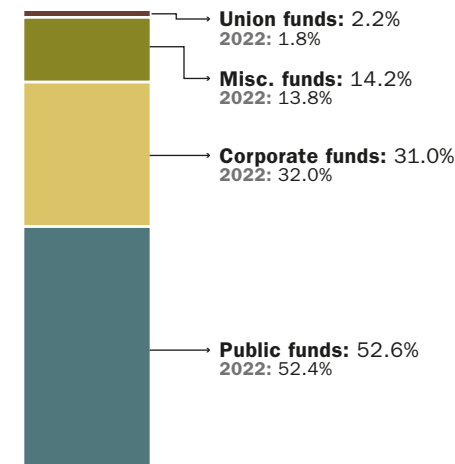
Rank	Sponsor	Assets	Change	Total DB	Total DC
201	New York Life	\$12,560	4.9%	\$7,166	\$5,394
202	Textron	\$12,537	-1.9%	\$7,137	\$5,400
203	Cook County Employees	\$12,478	10.5%	\$12,478	
204	Kroger	\$12,466	5.7%	\$2,275	\$10,191
205	Oklahoma Public Employees	\$12,449	10.7%	\$10,987	\$1,462
206	Huntington Ingalls	\$12,427	3.1%	\$6,934	\$5,493
207	Sacramento County	\$12,340	6.8%	\$12,340	
208	Lumen Technologies	\$12,337	9.1%	\$5,242	\$7,095
209	Nationwide	\$12,285	10.6%	\$4,805	\$7,480
210	Northwell Health	\$12,276	12.0%	\$2,564	\$9,712
211	IMF	\$12,157	7.0%	\$12,157	
212	Rhode Island Employees	\$12,083	5.4%	\$10,341	\$1,742
213	Tennessee Valley Authority	\$12,078	5.5%	\$8,295	\$3,783
214	Sutter Health	\$12,029	0.2%	\$5,898	\$6,131
215	Parker-Hannifin	\$11,844	16.8%	\$5,455	\$6,389
216	Constellation Energy	\$11,801	242.3%	\$6,816	\$4,985
217	Altria	\$11,741	-0.2%	\$6,802	\$4,939
218	MIT	\$11,703	4.3%	\$5,297	\$6,406
219	Presbyterian Church	\$11,667	7.8%	\$10,618	\$1,049
220	Cargill	\$11,625	7.9%	\$2,854	\$8,771
221	Marsh McLennan	\$11,623	4.0%	\$4,406	\$7,217
222	Home Depot	\$11,533	10.4%		\$11,533
223	FirstEnergy	\$11,517	0.5%	\$7,730	\$3,787
224	Massachusetts Def. Comp.	\$11,456	10.3%		\$11,456
225	National Grid USA	\$11,452	-6.1%	\$6,076	\$5,376
226	Elevance Health	\$11,421	4.7%	\$1,250	\$10,171
227	Missouri State Employees	\$11,303	3.1%	\$8,491	\$2,812
228	Goldman Sachs	\$11,289	9.4%	\$890	\$10,399
229	Wyoming Retirement	\$11,244	9.0%	\$10,284	\$960
230	Longshoremen ILWU-PMA	\$11,242	5.8%	\$8,521	\$2,721
231	Novartis US	\$11,153	8.4%	\$2,026	\$9,127
232	NTESS	\$11,090	-3.5%	\$5,676	\$5,414
233	New Hampshire Retirement	\$11,071	3.0%	\$11,071	
234	Motion Picture Industry	\$11,061	19.7%	\$5,108	\$5,953
235	Allstate	\$11,026	-0.2%	\$4,503	\$6,523
236	Alameda County	\$10,900	4.8%	\$10,900	
237	Chicago Teachers	\$10,866	1.8%	\$10,866	
238	Duke University	\$10,806	13.4%	\$2,681	\$8,125
239	McKinsey	\$10,788	29.7%	\$353	\$10,435
240	NextEra Energy	\$10,787	0.3%	\$4,937	\$5,850
241	Charter Communications	\$10,671	7.1%	\$2,644	\$8,027
242	San Diego City	\$10,633	6.1%	\$10,633	
243	Contra Costa County	\$10,570	6.4%	\$10,570	
244	Sherwin-Williams	\$10,562	-4.6%	\$122	\$10,440
245	Cleveland Clinic	\$10,458	9.7%	\$1,130	\$9,328
246	GlaxoSmithKline USA	\$10,446	1.1%	\$2,910	\$7,536
247	Arkansas Employees	\$10,400	8.3%	\$10,400	
248	UPMC	\$10,318	10.5%	\$2,855	\$7,463
249	Stanford University	\$10,289	11.8%	\$208	\$10,081
250	D.C. Retirement Board	\$10,277	8.6%	\$10,277	
251	Harvard University	\$10,159	33.4%	\$1,549	\$8,610
252	Missouri Local Government	\$10,106	3.9%	\$10,106	
253	Bristol-Myers Squibb	\$10,069	13.3%	\$166	\$9,903
254	Schlumberger	\$10,044	-4.2%	\$3,476	\$6,568
255	Eversource Energy	\$9,948	8.0%	\$6,073	\$3,875
256	Mars	\$9,900	6.0%	\$5,554	\$4,346
257	Southern California Edison	\$9,870	18.6%	\$4,614	\$5,256
258	American Honda Motor	\$9,762	13.6%	\$4,664	\$5,098
259	Siemens USA	\$9,739	7.8%	\$1,527	\$8,212
260	Hartford Financial	\$9,726	6.2%	\$3,626	\$6,100
261	YMCA	\$9,694	14.1%		\$9,694
262	Illinois Police Officers	\$9,642	48.3%	\$9,642	
263	American Electric	\$9,624	4.6%	\$4,604	\$5,020
264	Fairfax County Retirement	\$9,527	11.6%	\$9,527	
265	Edward Jones	\$9,522	18.5%		\$9,522
266	Public Service Enterprise	\$9,453	-6.1%	\$5,453	\$4,000
267	General Mills	\$9,412	-10.1%	\$5,144	\$4,268
268	Phillips 66	\$9,397	26.8%	\$2,175	\$7,222
269	Leidos	\$9,337	14.7%	\$29	\$9,308

Rank	Sponsor	Assets	Change	Total DB	Total DC
270	Southern Baptist Convention	\$9,285	13.1%	\$283	\$9,002
271	Adventist Health	\$9,259	100.8%	\$259	\$9,000
272	Eaton	\$9,248	-0.2%	\$2,454	\$6,794
273	Nestle USA	\$9,233	-5.4%	\$2,495	\$6,738
274	CUNY	\$9,192	13.4%		\$9,192
275	Meta Platforms	\$9,166	42.9%		\$9,166
276	UBS Americas	\$9,106	8.7%	\$1,060	\$8,046
277	Capital One Financial	\$9,080	14.4%	\$232	\$8,848
278	Advocate Health	\$9,070	47.3%	\$1,007	\$8,063
279	Boilermaker-Blacksmith	\$9,021	0.6%	\$7,771	\$1,250
280	Union Pacific	\$9,010	1.6%	\$4,674	\$4,336
281	Motorola Solutions	\$9,008	-0.9%	\$3,266	\$5,742
282	Marathon Petroleum	\$8,997	6.9%	\$2,154	\$6,843
283	Carpenters, Northern California	\$8,975	20.2%	\$5,479	\$3,496
284	Northwestern Mutual	\$8,940	-8.1%	\$5,119	\$3,821
285	North Dakota State	\$8,935	40.0%	\$8,935	
286	Los Angeles City Def. Comp.	\$8,919	16.6%		\$8,919
287	Utah Higher Education	\$8,889	13.4%		\$8,889
288	Marriott International	\$8,871	9.7%		\$8,871
289	WestRock	\$8,869	9.9%	\$4,351	\$4,518
290	TIAA	\$8,751	17.1%		\$8,751
291	Columbia University	\$8,699	21.0%		\$8,699
292	Vanguard Group	\$8,697	13.3%		\$8,697
293	Entergy	\$8,683	3.3%	\$5,074	\$3,609
294	BASF USA	\$8,592	3.2%	\$2,161	\$6,431
295	NFL Player Benefits	\$8,513	15.9%	\$3,318	\$5,195
296	UFCW Industry, Illinois	\$8,500	1.7%	\$8,500	
297	Albertsons	\$8,498	3.4%	\$1,407	\$7,091
298	Texas Instruments	\$8,429	1.3%	\$682	\$7,747
299	Southwest Airlines Pilots	\$8,376	14.1%		\$8,376
300	MUFG Americas	\$8,348	6.9%	\$4,855	\$3,493
301	Johnson Controls	\$8,294	2.2%	\$1,691	\$6,603
302	Univ. of Southern California	\$8,273	13.7%	\$128	\$8,145
303	Cleveland-Cliffs	\$8,250	0.5%	\$4,440	\$3,810
304	Paramount Global	\$8,244	11.5%	\$2,460	\$5,784
305	ConocoPhillips	\$8,236	17.5%	\$1,295	\$6,941
306	Carpenters, New York City	\$8,235	8.7%	\$4,890	\$3,345
307	Yale University	\$8,233	19.7%		\$8,233
308	Danaher	\$8,227	5.5%	\$1,893	\$6,334
309	Burlington Northern Santa Fe	\$8,210	4.0%	\$2,401	\$5,809
310	Carpenters, North Atlantic	\$8,203	-9.6%	\$8,203	
311	Progressive	\$8,173	26.4%		\$8,173
312	Coca-Cola	\$8,150	4.4%	\$4,503	\$3,647
313	Evangelical Lutheran Church	\$8,092	13.4%		\$8,092
314	Sanofi-Aventis	\$8,072	9.9%	\$735	\$7,337
315	Thermo Fisher Scientific	\$8,049	10.2%	\$959	\$7,090
316	Broadcom	\$8,001	8.3%	\$1,212	\$6,789
317	Tenet Healthcare	\$7,987	1.0%	\$663	\$7,324
318	Hewlett Packard Enterprise	\$7,983	6.9%		\$7,983
319	Cummins	\$7,948	9.2%	\$3,200	\$4,748
320	University System of Georgia	\$7,940			\$7,940
321	Lowes	\$7,901	2.8%		\$7,901
322	HSBC USA	\$7,896	-0.8%	\$3,596	\$4,300
323	Mount Sinai	\$7,880	17.3%	\$23	\$7,857
324	T-Mobile	\$7,869	7.5%		\$7,869
325	Sempra Energy	\$7,818	5.8%	\$3,126	\$4,692
326	UNC System	\$7,817	-12.3%		\$7,817
327	American Express	\$7,785	13.0%	\$1,004	\$6,781
328	Cornell University	\$7,774	14.6%		\$7,774
329	Warner Bros. Discovery	\$7,741		\$546	\$7,195
330	American International Group	\$7,722	-2.0%	\$3,537	\$4,185
331	Illinois Firefighters	\$7,658	14.1%	\$7,658	
332	DTE Energy	\$7,517	-5.2%	\$4,311	\$3,206
333	Michigan State University	\$7,508	13.4%		\$7,508
334	Chubb	\$7,470	2.3%	\$3,477	\$3,993
335	Ventura County	\$7,448	10.0%	\$7,448	
336	Farmers Group	\$7,441	3.6%	\$3,047	\$4,394
337	Nucor	\$7,439	21.3%		\$7,439
338	Sheet Metal National	\$7,428	10.4%	\$7,428	

Funds by category

Assets are in millions as of Sept. 30.

Top 200 asset breakdown



The largest funds

Corporate funds

Rank	Fund	Assets
1	Boeing	\$119,224
2	Kaiser Permanente	\$91,551
3	AT&T	\$90,497
4	RTX	\$89,511
5	Lockheed Martin	\$76,842
6	IBM	\$76,670
7	General Electric	\$74,409
8	General Motors	\$73,439
9	United Parcel Service	\$71,932
10	Bank of America	\$65,521

Public funds

Rank	Fund	Assets
1	California Public Employees	\$452,453
2	California State Teachers	\$309,931
3	New York City Retirement	\$247,999
4	New York State Common	\$246,307
5	Florida State Board	\$194,659
6	Texas Teachers	\$181,656
7	Washington State Board	\$167,033
8	Wisconsin Investment Board	\$130,932
9	New York State Teachers	\$130,783
10	North Carolina	\$126,472

Union funds

Rank	Fund	Assets
1	Teamsters, Western Conf.	\$53,428
2	Teamsters, Central States	\$42,147
3	National Electric	\$31,022
4	Operating Engineers Int'l	\$23,193
5	National Elevator Industry	\$16,417
6	1199SEIU National	\$15,869
7	IAM National	\$14,862
8	Electrical Ind., Joint Board	\$13,911

Miscellaneous funds

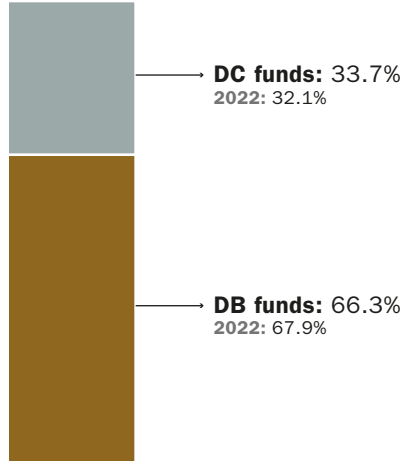
Rank	Fund	Assets
1	Federal Retirement Thrift	\$782,835
2	California University	\$118,284
3	United Nations Joint Staff	\$81,546
4	Federal Reserve Employees	\$37,484
5	World Bank	\$30,799
6	Illinois State Universities	\$26,289
7	CommonSpirit Health	\$25,434
8	SUNY	\$24,643
9	National Railroad	\$24,310
10	National Rural Electric	\$22,163

THE LARGEST RETIREMENT FUNDS

Funds by type

Assets are in millions as of Sept. 30.

Top 200 asset breakdown



The largest funds

Defined benefit plans

Rank	Fund	Assets
1	California Public Employees	\$450,289
2	California State Teachers	\$307,868
3	New York City Retirement	\$247,999
4	New York State Common	\$246,307
5	Texas Teachers	\$181,656
6	Florida State Board	\$180,466
7	Washington State Board	\$140,495
8	New York State Teachers	\$130,783
9	Wisconsin Investment Board	\$124,565
10	North Carolina	\$111,796

Defined contribution plans

Rank	Fund	Assets
1	Federal Retirement Thrift	\$782,835
2	Boeing	\$68,220
3	IBM	\$53,022
4	Lockheed Martin	\$51,399
5	Bank of America	\$48,855
6	RTX	\$48,279
7	Wells Fargo	\$45,766
8	AT&T	\$44,892
9	Microsoft	\$42,572
10	Walmart	\$39,598

Public DC plans

Rank	Fund	Assets
1	New York State Def. Comp.	\$33,890
2	New York City Def. Comp.	\$27,552
3	Washington State Board	\$26,538
4	California Savings Plus	\$19,700
5	Ohio Deferred Comp.	\$18,665
6	Los Angeles Co. Deferred	\$18,645
7	New York City Teachers	\$17,388
8	North Carolina	\$14,676
9	Florida State Board	\$14,193
10	Michigan Retirement	\$12,700

Rank	Sponsor	Assets	Change	Total DB	Total DC
339	AstraZeneca US	\$7,417	7.7%	\$852	\$6,565
340	TriNet Group	\$7,410	14.1%		\$7,410
341	Montgomery County	\$7,408	24.1%	\$6,145	\$1,263
342	Houston Police Officers	\$7,375	7.8%	\$7,375	
343	Aon	\$7,367	0.2%	\$1,546	\$5,821
344	Manufacturers & Traders	\$7,367	4.2%	\$3,011	\$4,356
345	Insperty	\$7,355	29.9%		\$7,355
346	University of Chicago	\$7,340	11.6%	\$1,370	\$5,970
347	ADP	\$7,268	7.0%	\$1,629	\$5,639
348	Humana	\$7,254	16.3%		\$7,254
349	Emerson Electric	\$7,225	0.5%	\$3,590	\$3,635
350	Intermountain Healthcare	\$7,221	5.7%	\$3,079	\$4,142
351	Colorado Fire & Police	\$7,217	8.5%	\$6,493	\$724
352	ADP TotalSource	\$7,183			\$7,183
353	UANPF	\$7,160	3.9%	\$7,153	\$7
354	Philadelphia Public Employees	\$7,128	12.7%	\$7,128	
355	Becton, Dickinson	\$7,127	5.2%	\$2,129	\$4,998
356	Charles Schwab	\$7,113	17.3%		\$7,113
357	Booz Allen Hamilton	\$7,059	10.8%		\$7,059
358	WTW	\$7,057	2.4%	\$3,183	\$3,874
359	Qualcomm	\$6,998	7.2%		\$6,998
360	National Sprinkler Local 669	\$6,995	9.8%	\$4,469	\$2,526
361	United States Steel	\$6,965	0.1%	\$4,361	\$2,604
362	Kraft Heinz	\$6,926	-6.6%	\$3,197	\$3,729
363	MITRE	\$6,866	9.0%		\$6,866
364	Goodyear Tire & Rubber	\$6,857	-8.7%	\$4,081	\$2,776
365	SAP America	\$6,846	10.7%		\$6,846
366	Corning	\$6,844	-4.0%	\$2,756	\$4,088
367	Ameren	\$6,832	3.2%	\$4,076	\$2,756
368	Chicago City Deferred Comp.	\$6,820	13.4%		\$6,820
369	Sysco	\$6,775	-13.6%	\$2,625	\$4,150
370	ABA Retirement	\$6,700	8.1%		\$6,700
371	Vermont Pension	\$6,686	6.8%	\$5,734	\$952
372	Michelin	\$6,668	4.3%	\$2,486	\$4,182
373	Xcel Energy	\$6,585	-0.2%	\$2,799	\$3,786
374	MassMutual	\$6,559	6.5%	\$2,588	\$3,971
375	Pentegra	\$6,536	-38.9%	\$4,262	\$2,274
376	University of Kentucky	\$6,465	13.4%		\$6,465
377	Amgen	\$6,450	10.6%		\$6,450
378	Mid-America Carpenters	\$6,442	15.1%	\$5,052	\$1,390
379	Trinity Health	\$6,361	-9.0%	\$5,271	\$1,090
380	Memorial Sloan-Kettering	\$6,354	8.5%	\$1,390	\$4,964
381	Macy's	\$6,350	3.6%	\$2,352	\$3,998
382	University of Rochester	\$6,348	14.9%		\$6,348
383	Siemens Healthineers USA	\$6,328	7.8%	\$837	\$5,491
384	Carpenters, Southwest	\$6,317	12.4%	\$6,302	\$15
385	Washington University	\$6,312	17.2%		\$6,312
386	Service Employees 32B & 32J	\$6,311	22.3%	\$4,080	\$2,231
387	California Inst. of Technology	\$6,302	16.3%		\$6,302
388	Boston Retirement	\$6,255	8.6%	\$6,255	
389	WEC Energy Group	\$6,214	-22.0%	\$2,830	\$3,384
390	Ingersoll-Rand	\$6,201	3.1%	\$855	\$5,346
391	Savannah River	\$6,191	3.0%	\$3,807	\$2,384
392	Highmark	\$6,168	7.4%	\$3,233	\$2,935
393	Laborers, Northern California	\$6,152	26.0%	\$4,783	\$1,369
394	Steelworkers Pension	\$6,135	4.3%	\$6,133	\$2
395	Salesforce.com	\$6,119	23.8%		\$6,119
396	Carpenters, Eastern Atlantic	\$6,104	110.4%	\$4,130	\$1,974
397	Air Products & Chemicals	\$6,101	29.6%	\$3,514	\$2,587
398	Capital Group	\$6,094	5.7%		\$6,094
399	Philips	\$6,085	5.3%	\$516	\$5,569
400	State Street	\$6,050	5.8%	\$870	\$5,180
401	San Mateo County	\$5,990	12.0%	\$5,990	
402	AECOM	\$5,976	7.6%	\$99	\$5,877
403	Fresno County	\$5,946	12.5%	\$5,946	
404	Alaska Air	\$5,931	1.4%	\$1,938	\$3,993
405	Eastman Kodak	\$5,923	0.7%	\$3,488	\$2,435
406	Nike	\$5,920	13.3%		\$5,920
407	WMATA Retirement	\$5,914	11.6%	\$5,914	

Rank	Sponsor	Assets	Change	Total DB	Total DC
408	Schneider Electric USA	\$5,886	0.8%	\$1,447	\$4,439
409	United Natural Foods	\$5,870	-0.2%	\$1,559	\$4,311
410	Jacobs Engineering	\$5,783	10.5%	\$278	\$5,505
411	Stryker	\$5,745	15.8%		\$5,745
412	UFCW Joint Trust, S. Calif.	\$5,711	21.0%	\$5,702	\$9
413	Wawa	\$5,684	37.8%		\$5,684
414	Burns & McDonnell	\$5,658	35.8%	\$3	\$5,655
415	Milwaukee City	\$5,655	7.1%	\$5,655	
416	Battelle	\$5,622	2.8%	\$2,894	\$2,728
417	McKesson	\$5,612	34.3%		\$5,612
418	Rockwell Automation	\$5,588	-5.0%	\$2,195	\$3,393
419	UFCW, Atlanta	\$5,563	9.6%	\$5,563	
420	Thomson Reuters	\$5,519	11.6%	\$1,595	\$3,924
421	Principal Financial	\$5,518	2.4%	\$1,637	\$3,881
422	Valero Energy	\$5,517	4.4%	\$2,344	\$3,173
423	Nissan USA	\$5,515	4.3%	\$1,856	\$3,659
424	Florida Deferred Compensation	\$5,514	13.4%		\$5,514
425	CMS/Consumers Energy	\$5,507	1.1%	\$3,255	\$2,252
426	GEICO	\$5,473	10.3%		\$5,473
427	Sentara Healthcare	\$5,438	7.1%	\$2,399	\$3,039
428	Operating Engineers Local 3	\$5,428	17.5%	\$4,990	\$438
429	Operating Engineers Midwest	\$5,394	6.6%	\$5,390	\$4
430	TD Bank	\$5,379	7.9%	\$994	\$4,385
431	Army & Air Force Exchange	\$5,366	9.4%	\$5,366	
432	Illinois Tool Works	\$5,353	13.7%	\$1,366	\$3,987
433	Baxter International	\$5,352	21.5%	\$1,316	\$4,036
434	HDR	\$5,343	40.4%		\$5,343
435	Kimberly-Clark	\$5,305	1.1%	\$1,031	\$4,274
436	Kern County Employees	\$5,302	8.2%	\$5,302	
437	Ecolab	\$5,232	-5.0%	\$1,762	\$3,470
438	Bechtel Global	\$5,229	7.0%		\$5,229
439	Takeda Pharmaceuticals	\$5,222	10.2%	\$342	\$4,880
440	Boston Scientific	\$5,215	13.9%		\$5,215
441	CSX	\$5,163	0.3%	\$2,262	\$2,901
442	New York State Nurses	\$5,152	4.4%	\$5,137	\$15
443	Deutsche Bank USA	\$5,146	6.4%	\$1,153	\$3,993
444	Health Care Service	\$5,139	10.2%	\$2,134	\$3,005
445	Xerox	\$5,128	0.4%	\$1,380	\$3,748
446	Robert Bosch	\$5,113	2.6%	\$1,489	\$3,624
447	PPL	\$5,108	0.2%	\$3,324	\$1,784
448	Stanford Hospital	\$5,079	16.5%	\$159	\$4,920
449	Whirlpool	\$5,061	-4.0%	\$2,118	\$2,943
450	Hearst	\$5,054	8.6%	\$2,553	\$2,501
451	Bridgestone Americas	\$5,045	-10.6%	\$2,092	\$2,953
452	Houston Firefighters	\$5,021	3.7%	\$5,021	
453	BJC HealthCare	\$5,020	2.0%	\$2,826	\$2,194
454	Maryland Supplemental	\$5,020	9.5%		\$5,020
455	Frontier Communications	\$5,019	-1.0%	\$2,173	\$2,846
456	Parsons	\$4,976	41.1%		\$4,976
457	PPG Industries	\$4,975	-0.1%	\$1,049	\$3,926
458	Quest Diagnostics	\$4,950	6.1%		\$4,950
459	Louisiana Parochial Employees	\$4,941	11.9%	\$4,941	
460	ECA & Local 134 IBEW	\$4,935	11.2%	\$2,173	\$2,762
461	Major League Baseball	\$4,869	7.0%	\$4,837	\$32
462	San Jose Police & Fire	\$4,861	11.5%	\$4,861	
463	Sony America	\$4,847	10.8%		\$4,847
464	Enterprise Rent-A-Car	\$4,842	14.5%		\$4,842
465	Kansas Regents	\$4,840	7.4%		\$4,840
466	S&P Global	\$4,831	2.9%	\$1,251	\$3,580
467	Northwestern University	\$4,795	14.5%		\$4,795
468	NTCA	\$4,793	3.5%	\$2,199	\$2,594
469	University of Nebraska	\$4,790	13.4%		\$4,790
470	Conagra Brands	\$4,786	-4.1%	\$3,015	\$1,771
471	Maryland Optional	\$4,754	13.4%		\$4,754
472	Painters & Allied Trades	\$4,745	12.3%	\$4,088	\$657
473	Winco Foods	\$4,735	36.3%		\$4,735
474	Science Applications Int'l	\$4,700	10.6%	\$45	\$4,655
475	Pinnacle West	\$4,681	-5.4%	\$3,294	\$1,387